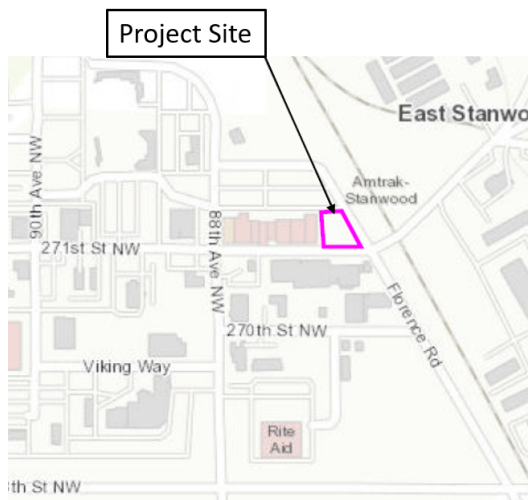




Depot Park - Art Project Narrative

INTRODUCTION:

The City of Stanwood purchased a 0.11-acre parcel on the eastern edge of Stanwood's main street business district and near the Amtrak train station for an urban business district park and entry point for visitors arriving by train.



The City acquired the downtown park site as part of the Twin City Mile Downtown Revitalization Project, envisioning the creation of an urban, hard-surfaced park that would serve as a welcoming space for shoppers and visitors to pause, relax, and enjoy their surroundings.

A key feature of Depot Park will be the inclusion of a public art piece designed to complement and enhance the urban park concept described herein.

PARK DESIGN:

City Council approved the park's concept plan on June 7, 2024, and allocated funding for the final design and construction in the 2025–2026 budget. Key elements of the park include:

- A combination of covered and open seating areas for relaxation and socializing;
- A multi-purpose shelter that can function as a picnic area, performance stage, or event space;

- A signature art feature;
- Wayfinding signage; and
- Dedicated space for the holiday tree.

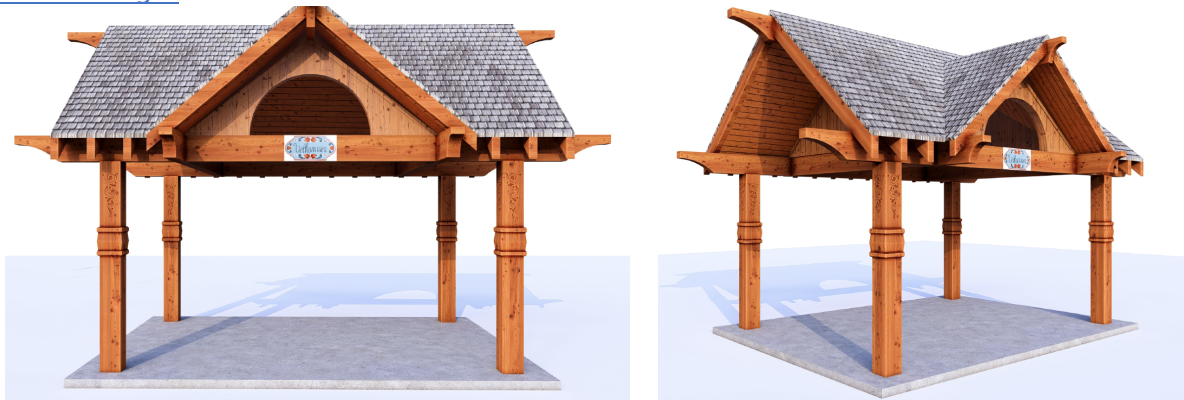
The overall intent of the project is to establish a vibrant and welcoming downtown space that supports and complements the business district and provides a functional community gathering space.

Depot Park Layout Plan

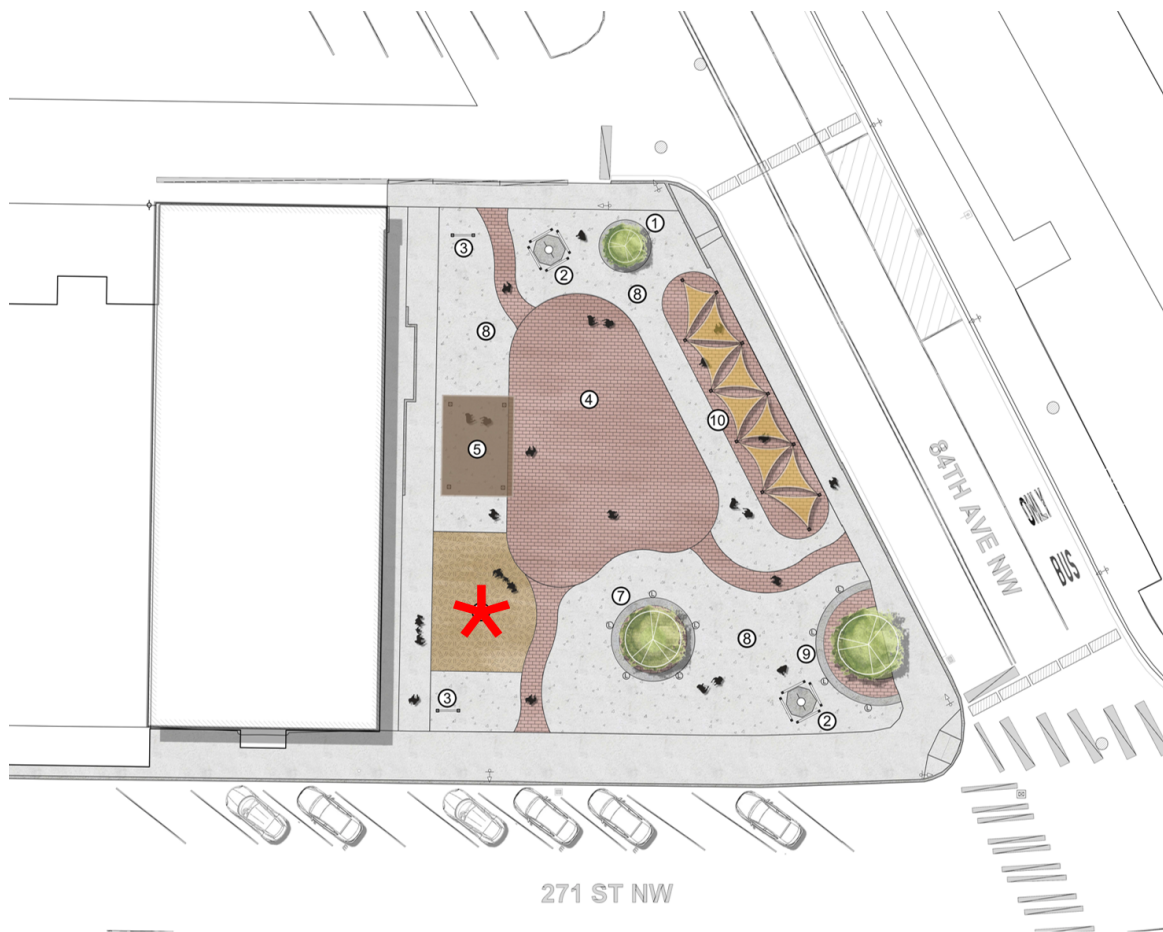


The Depot Park design pays homage to several defining themes of Stanwood, reflecting the city's historic Norwegian heritage through the shelter's architectural style and honoring Stanwood's early history. The design also complements the Twin City Mile by incorporating brick pavers as the primary hard surface material.

Shelter Design:



Art Piece Location



*** Location of Art Feature**

The art feature will be prominently located at the southwest corner of the park, adjacent to 271st Street, along “Main Street.” Positioned at this key entry point, the artwork will serve as a welcoming landmark for visitors, shoppers, and community members alike.

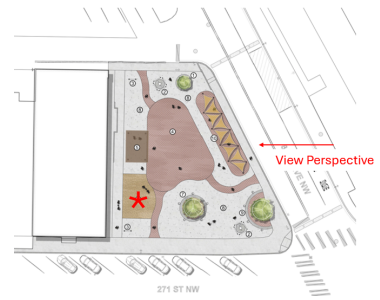
The graphics below illustrate the proposed location of the art piece, identified in the renderings by the area shown in green Astroturf. This area marks the designated site within Depot Park where the artwork will be installed.



Sketch Up View:
Looking North From
271st Street



Sketch Up View:
Looking South From
the Back Parking
Lot



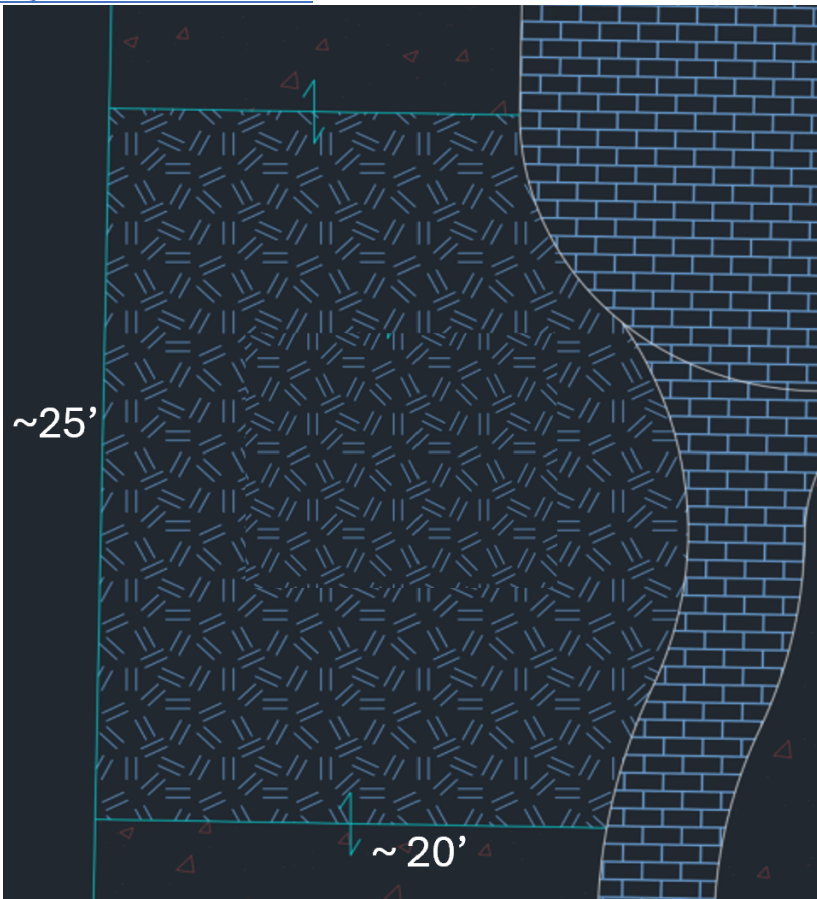
Sketch Up View:
Looking West From 84th
Avenue

Project Vision:

Designed to draw attention and invite exploration, the piece will embody the character of Stanwood's downtown, reflecting both its cultural heritage and the City's vision for a vibrant, connected community space. As part of the park's entry experience, the art will help create a sense of arrival and contribute to the overall identity of Depot Park as a gathering place for all.

The Depot Park art piece will serve as a signature element within the downtown public space, thoughtfully scaled to complement its surroundings and enhance the park's welcoming character. Design should be both visually engaging and approachable, the artwork will invite interaction and encourage visitors to explore, touch, and experience it up close.

Project Area Dimensions:



The designated area for the art piece measures approximately **20 feet by 25 feet**, totaling around **475 square feet**. The artwork must be designed to fit comfortably within these dimensions while maintaining ADA-compliant access around its perimeter. This ensures that the installation remains accessible and inclusive for all visitors, allowing unobstructed circulation throughout the park.

Themes:

The proposed art piece should honor and celebrate the spirit of Stanwood by reflecting themes that connect to the city's history, rural roots, and cultural heritage. Artists are encouraged to explore interpretations that acknowledge Stanwood's agricultural traditions, its close relationship with the natural environment, and its historic Norwegian influences. The artwork should convey a strong sense of place and be family friendly, recognizing the city's past while complementing its vision for a vibrant and welcoming downtown.

Materials:

The artwork should be designed with durability, safety, and long-term maintenance in mind, appropriate for a permanent outdoor installation in a public park setting. Materials must withstand the Pacific Northwest climate, including rain, sun exposure, and seasonal temperature changes. The piece should be securely installed and constructed to prevent climbing hazards or sharp edges.

Artists are encouraged to consider how the public will experience and interact with the work. The piece may invite touch or engagement while maintaining accessibility and clear

pedestrian circulation. Proposals should also demonstrate sensitivity to the park's existing design features and complement the surrounding landscape, architecture, and pedestrian flow.

SELECTION AND APPROVAL PROCESS:

Selection Criteria

Artists or artist teams will be evaluated based on the following criteria:

- Artistic excellence and originality – Demonstrated ability to create visually compelling, conceptually strong, and contextually relevant artwork.
- Relevance to theme – How well the proposed concept reflects Stanwood's history, rural roots, cultural heritage, and community identity.
- Quality and durability of materials – Suitability of materials for long-term outdoor display, safety, and minimal maintenance.
- Integration with site – Compatibility of the design with Depot Park's layout, aesthetics, and pedestrian flow.
- Community connection – Potential of the artwork to engage, inspire, and resonate with residents and visitors.
- Interaction – Opportunity for the community to interact with the artwork, explore, touch, and experience it, up close.
- Professional experience – Past success with similar public art projects, including ability to meet budgets, timelines, and technical requirements.

Submission Requirements

Interested artists or artist teams are invited to submit the following materials for consideration:

1. Letter of Interest (1–2 pages) describing your artistic approach, interest in the project, and how your work aligns with the themes of Stanwood's history and community identity.
2. Concept Proposal including preliminary sketches, renderings, and written descriptions illustrating your design intent and vision for the site.
3. Resume or CV highlighting relevant public art experience.
4. Portfolio of previous work, including title, medium, dimensions, location, and year completed.

Submissions must be received by the stated deadline and should comply with all formatting and file-size requirements outlined in the full call for artists.

Review Process:

The City of Stanwood will commission the Depot Park artwork through the Stanwood Camano Arts Advocacy Commission (SCAAC). SCAAC will be responsible for preparing and issuing the Call for Artists, managing all aspects of the artist selection process, and coordinating communication throughout the review stages. This includes managing submission requirements, responding to artist inquiries, conducting the initial evaluation of proposals, and providing recommendations to the City.

The selection and design review process will include the following steps:

1. Review of Artist Submittals and Qualifications – Evaluation of applicants' experience, artistic merit, and compatibility with the project goals.
2. Review of Concept Design – Assessment of proposed themes, materials, and design intent for alignment with the Depot Park vision.
3. Selection of Artist – Formal recommendation of the artist or artist team to move forward with design development.
4. Review of Preliminary Design – Consideration of refined design concepts, materials, and site integration details.
5. Approval of Final Design – Final review for consistency with project objectives.

Following these reviews, the Economic Development Board will evaluate SCAAC's recommendations and make a formal recommendation to the City Council to either approve, modify, or reject the proposed design. City staff will then forward this recommendation to the Council for final approval. If the City Council rejects the proposed design, SCAAC will provide a second artist and design recommendation to the Economic Development board.

BUDGET:

A total budget of \$50,000 has been allocated for the design, fabrication, and installation of the public art piece at Depot Park. This amount is all-inclusive and must cover all costs associated with the project, including the artist's design fee, materials, fabrication, engineering, transportation, installation, insurance, permits, structural engineering, travel, and any other related expenses. No additional funds will be available beyond this amount. Artists should ensure that their proposals are realistic and achievable within the stated budget.

SCHEDULE:

Task:	Date:
Call for Artist	November 15, 2025-January 2, 2026
Artist & Design Preliminary Selection (SCAAC)	January 2026
Economic Development Board Review	January 2026
City Council Acceptance	February 2026
Council Committee Review (preliminary design)	Early March 2026
Final Design Review	April 2026
Fabrication	April – September 2026
Installation	October 2026